

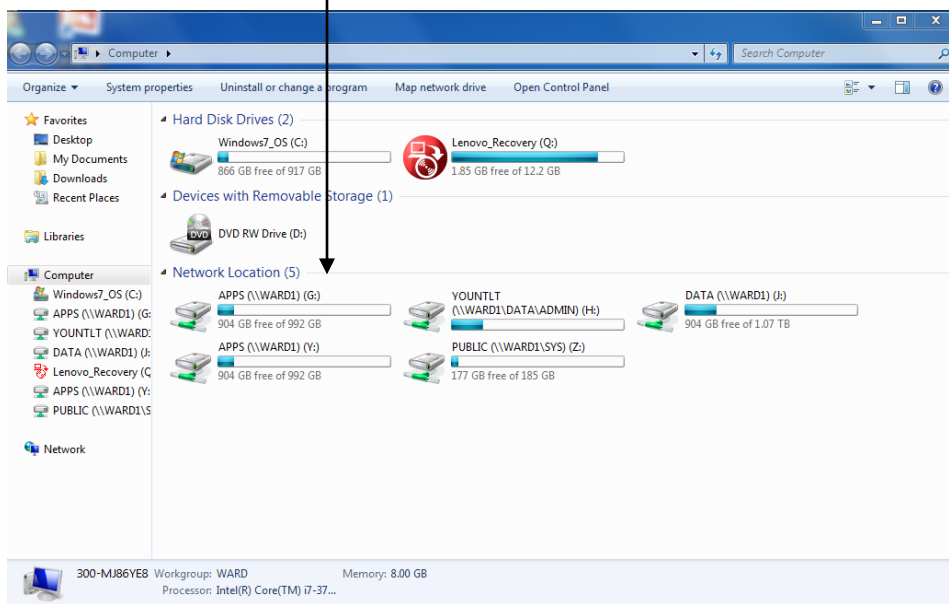
# Document Camera Installation (ACTIVIEW)

September 2016

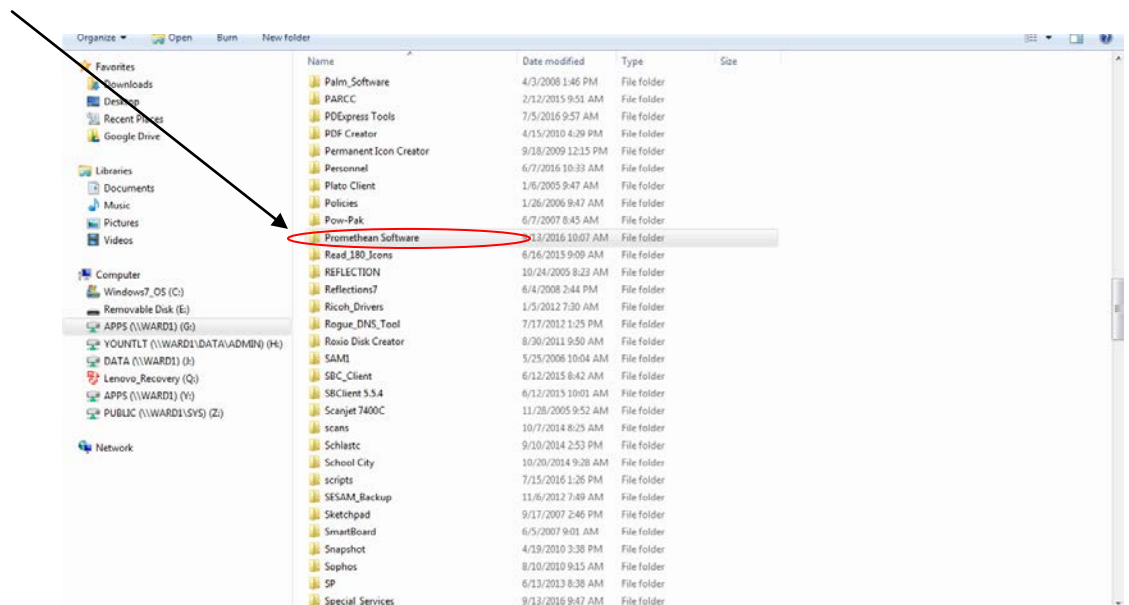
1. Click on computer



2. Click on G drive



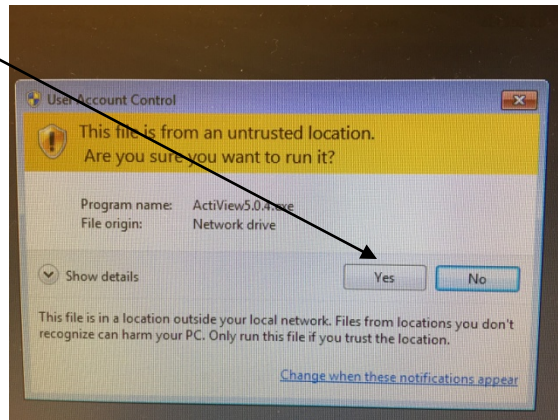
3. Find folder PROMETHEAN SOFTWARE



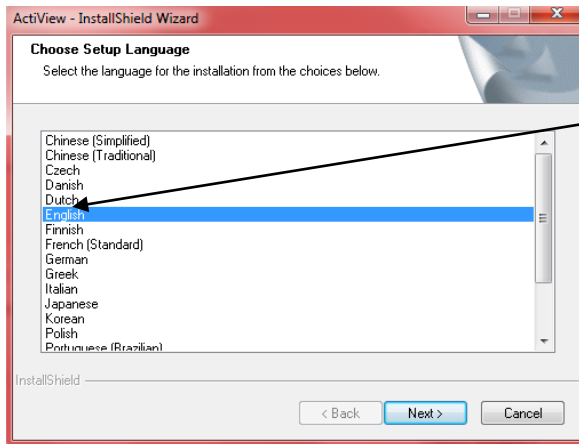
4. Double Click on ActiView

OLD	1/27/2015 9:17 AM	File folder	
00157891237544740276	12/7/2009 1:53 PM	Text Document	1 KB
ActiView5.0.4	8/13/2014 12:00 PM	Application	18,730 KB
ActivInspire_main_res_v1.1_ENU	1/27/2015 9:17 AM	ActivInspire Resou...	255,921 KB
ActivInspireSuite+v2.3.65940_1-27-15	1/27/2015 8:57 AM	Application	214,162 KB

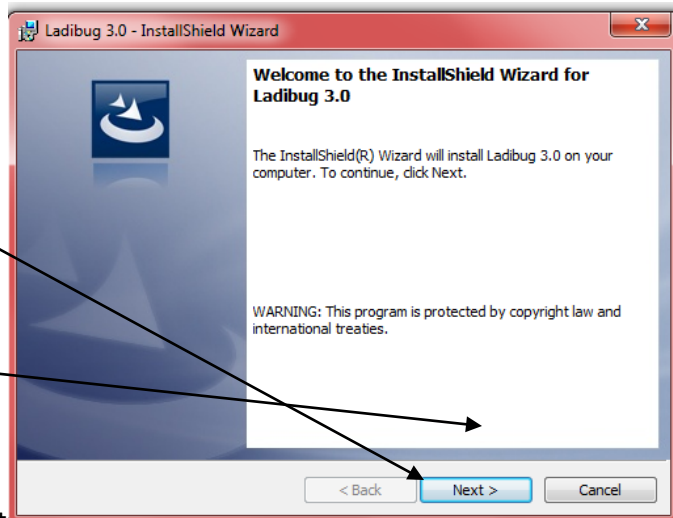
5. Click yes

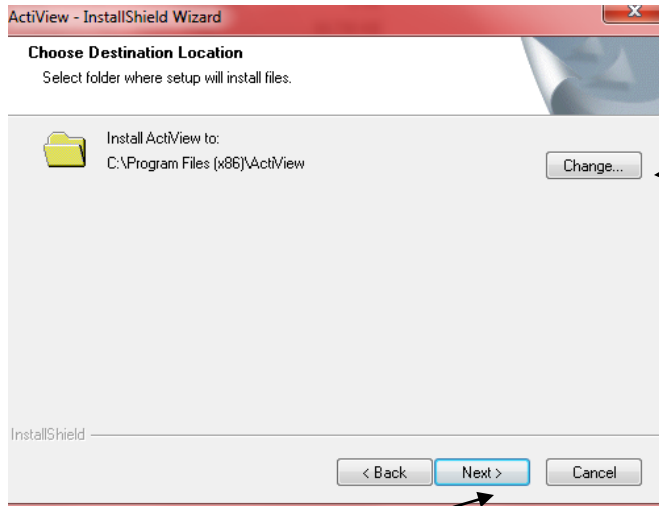


6. Chose language

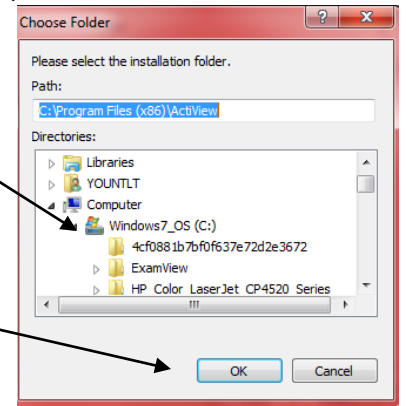


7. Click next



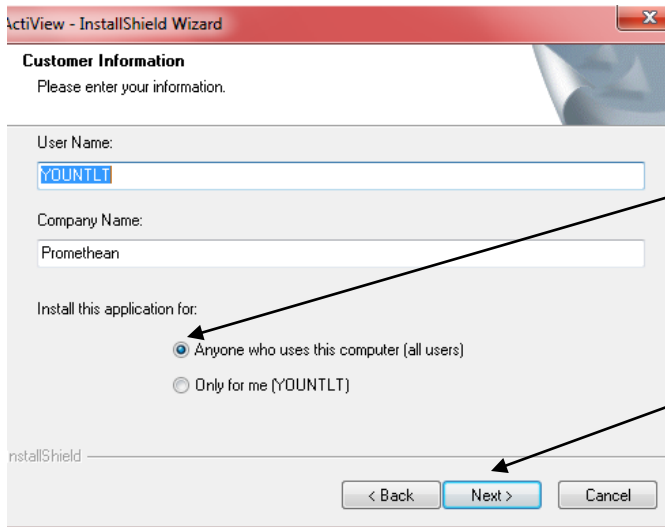


8. You can choose where to save files (choose h:/ if possible)



9. Choose h: drive if possible ( if not ) click ok

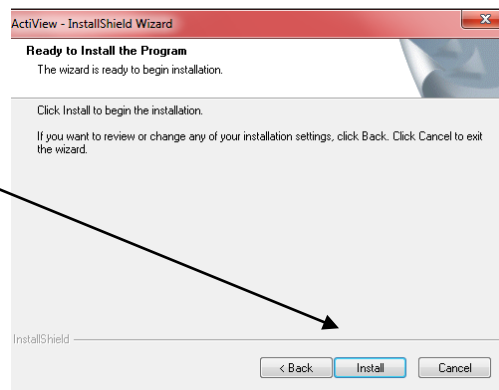
10. Click next



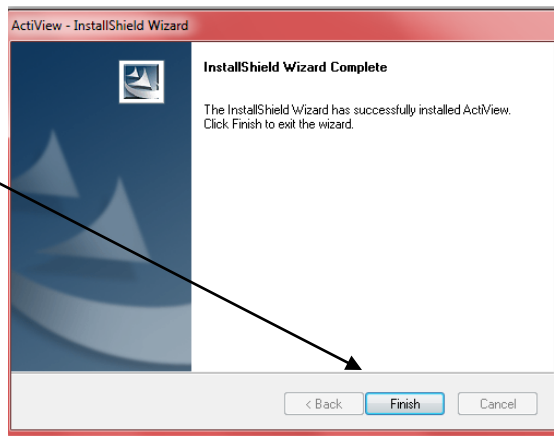
11. the next window will ask user name (this doesn't matter) make sure ANYONE WHO USES THIS COMPUTER IS CLICKED

12. Click next

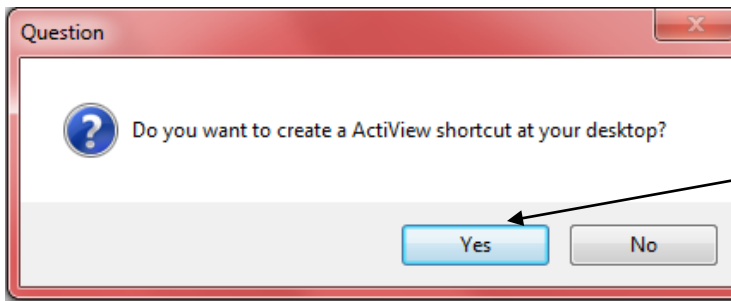
13. click install



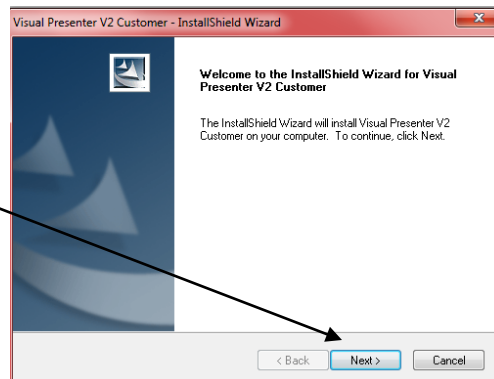
14. Click finish



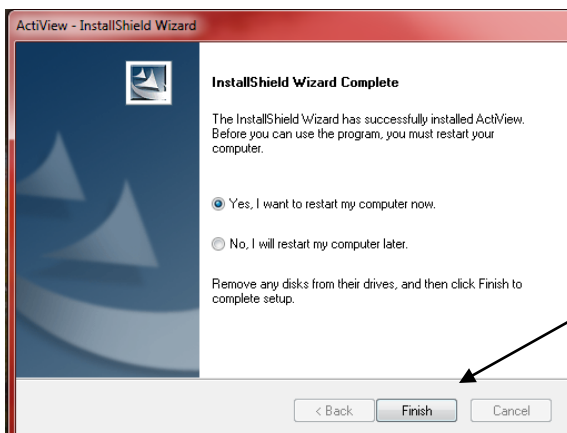
15. Click yes for desktop shortcut



16. Click next to install shortcut



17. click finish to restart computer for installation to be complete.



18. Click on icon to use Actiview

